



TIIG  
INJURY SURVEILLANCE IN THE NORTH WEST OF ENGLAND

SALFORD ROYAL HOSPITAL EMERGENCY DEPARTMENT

MONTHLY BULLETIN: OCTOBER 2013 TO SEPTEMBER 2014

This bulletin provides a breakdown of all injury attendances to Salford Royal Hospital Emergency Department (ED) between October 2013 and September 2014.

During this twelve month period there were 27,588 injury attendances to the ED. The month with the highest number of attendances, calculated as a daily average, was September 2014 (85 per day) with January 2014 having the lowest attendances (69 per day; **Figure 1**).

Males accounted for over half (55%) of all attendances (**Figure 1**). The largest proportions of attendances were for those aged between 20 and 34 years (26%) and between five and 19 years (21%; **Figure 2**).

The majority (57%) of attendances did not have a specific injury group recorded. Of the specified injury groups, falls accounted for the highest proportion (21%), followed by road traffic collisions (RTCs), assaults and sports injury which accounted for 5% of attendances each (**Table 1**).

Almost half (47%) of fall attendees were aged 65 years or over, half (50%) of assault attendees were aged between 20 and 34 years and over four in ten (41%) RTC attendees were aged between 20 and 34 years (**Figure 3**).

**Table 2** shows the ethnicity of injury attendees to Salford Royal Hospital ED. The large majority (87%) were White.

The disposal of a patient can give an indication of the severity of the injuries sustained. Almost half (47%) of attendees were discharged, three in ten (30%) were referred for further treatment and 19% were admitted to hospital (**Table 3**).

**Table 4** shows the arrival method of attendances to the ED. Over a fifth (21%) of attendees arrived by ambulance.

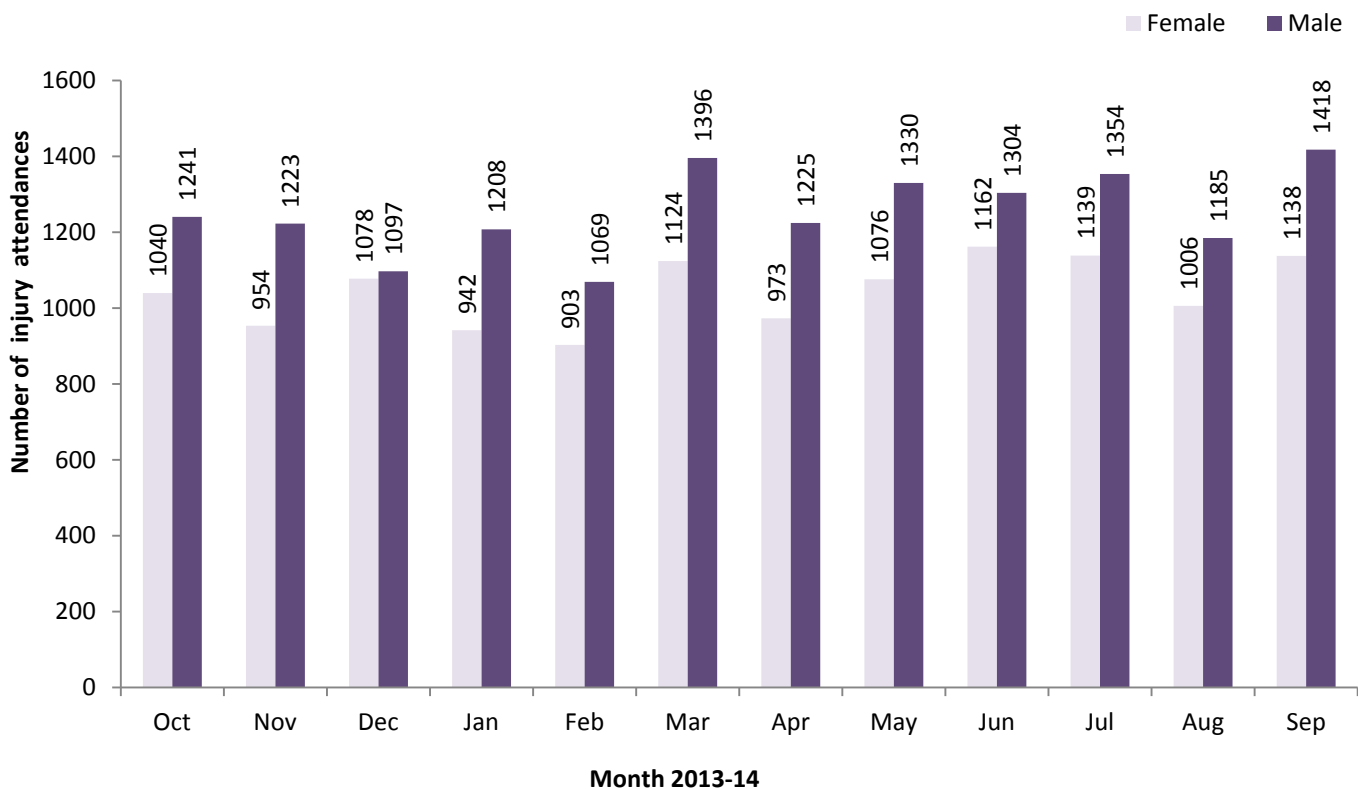
**Table 5** shows the incident location. Almost seven in ten (69%) injury attendances were recorded as other location, while 16% occurred at home and 6% occurred in a public place.

#### **Assault attendances**

Between October 2013 and September 2014 there were 1,393 assault-related injury attendances to Salford Royal Hospital ED.

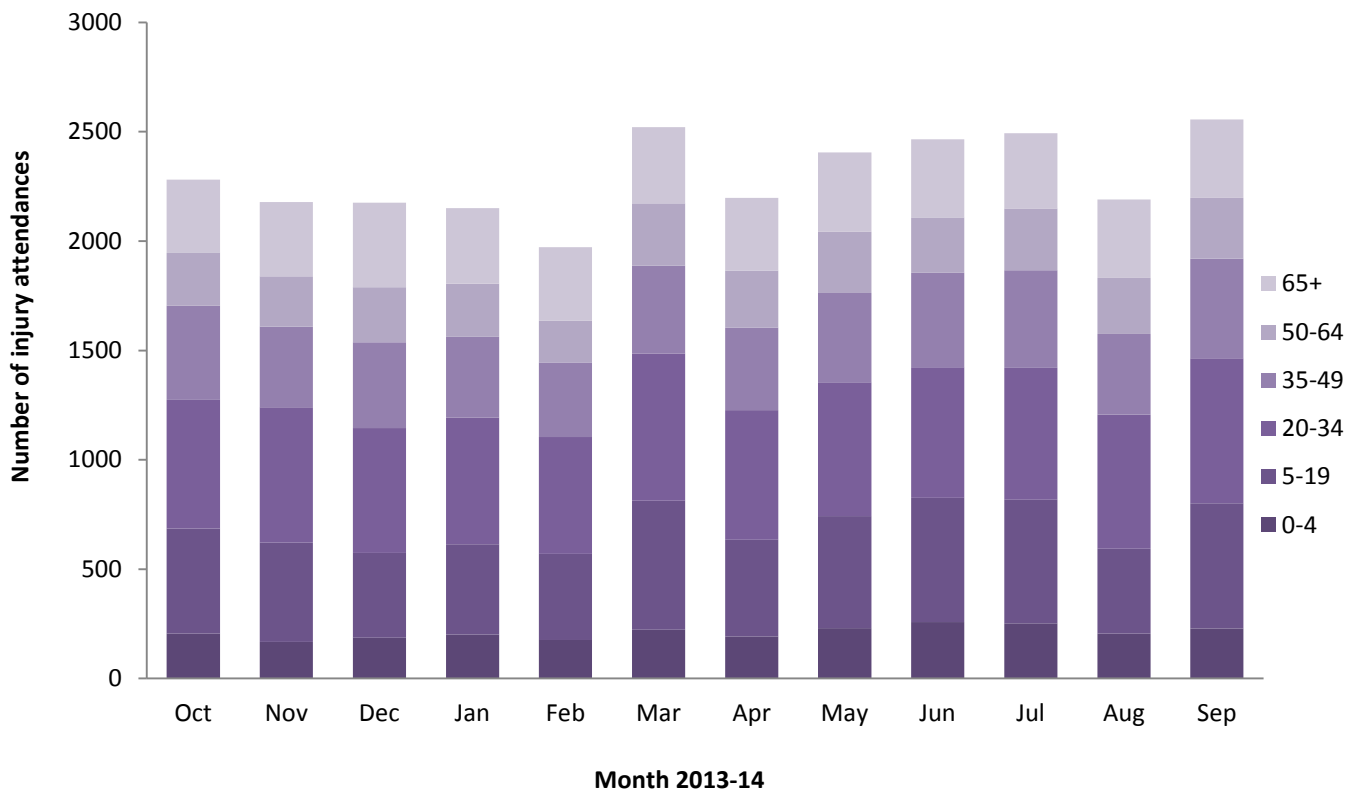
The majority (72%) of attendees were male and half (50%) were aged between 20 and 34 years while just under one-quarter (24%) were aged between 35 and 49 years. Almost three in ten (28%) arrived at the department by ambulance (**Table 6**).

Figure 1: ED injury attendances by gender and month, October 2013 to September 2014<sup>^</sup>



<sup>^</sup> There were <5 records where the gender was unknown; these have been omitted from the chart.

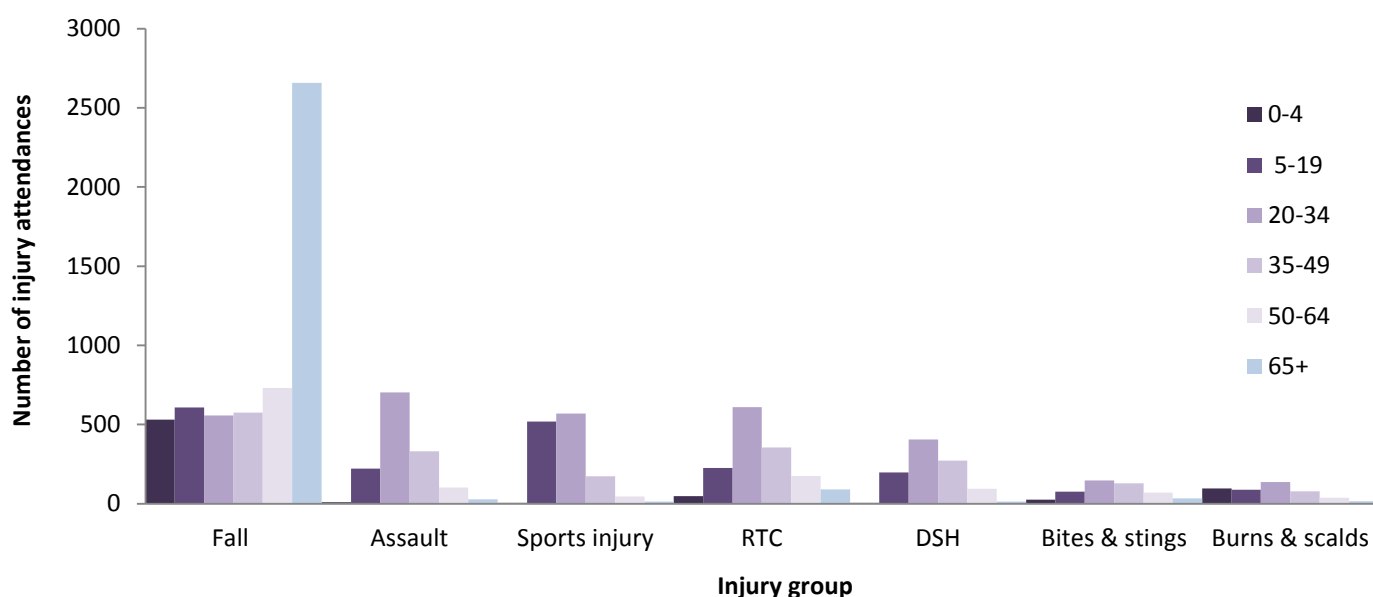
Figure 2: ED injury attendances by age group and month, October 2013 to September 2014



**Table 1: ED injury attendances by injury group and month, October 2013 to September 2014**

Injury group	Oct	Nov	Dec	Jan	Feb	Mar	Apr	May	Jun	Jul	Aug	Sep	Total	%
Other injury	1332	1232	1219	1187	1081	1452	1308	1463	1470	1476	1194	1368	15782	57
Fall	428	434	474	497	434	496	417	429	501	464	494	593	5661	21
RTC	119	139	141	123	137	149	105	125	98	101	124	142	1503	5
Assault	125	96	126	120	113	115	112	116	112	118	121	119	1393	5
Sports injury	112	137	74	102	91	138	119	87	102	115	71	177	1325	5
DSH	94	82	93	74	77	80	74	92	77	79	92	77	991	4
Bites & stings	36	19	12	11	16	44	34	45	65	100	59	39	480	2
Burns & scalds	35	39	36	37	23	47	29	49	41	40	36	41	453	2
<b>Total</b>	<b>2281</b>	<b>2178</b>	<b>2175</b>	<b>2151</b>	<b>1972</b>	<b>2521</b>	<b>2198</b>	<b>2406</b>	<b>2466</b>	<b>2493</b>	<b>2191</b>	<b>2556</b>	<b>27588</b>	<b>100</b>

**Figure 3: ED injury attendances by age group and injury group (excluding other injury), October 2013 to September 2014<sup>§</sup>**



<sup>§</sup> DSH = Deliberate self-harm; RTC = Road traffic collision

**Table 2: ED injury attendances by ethnicity and month, October 2013 to September 2014<sup>1,2</sup>**

Ethnicity	Oct	Nov	Dec	Jan	Feb	Mar	Apr	May	Jun	Jul	Aug	Sep	Total	%
White	197	188	187	189	169	217	188	211	214	219	191	225	2398	87
Not stated	166	151	156	125	145	173	157	131	163	156	137	147	1807	7
Any other ethnic	56	47	49	52	47	59	56	64	51	34	22	32	569	2
Black	34	27	31	26	29	31	37	40	37	36	39	39	406	1
Mixed	19	23	27	12	22	36	26	21	22	26	27	30	291	1
Pakistani	9	11	11	8	13	18	17	11	19	15	14	13	159	1
Any other Asian	8	17	16	12	10	10	9	14	11	11	9	19	146	1
Indian	8	7	6	10	9	16	7	10	9	11	9	7	109	0
Chinese	<10	<10	***	<10	<10	7	***	***	<15	<15	10	8	80	0
Bangladeshi	***	***	<10	***	***	0	<10	***	***	***	8	5	39	0
<b>Total</b>	<b>228</b>	<b>217</b>	<b>217</b>	<b>215</b>	<b>197</b>	<b>252</b>	<b>219</b>	<b>240</b>	<b>246</b>	<b>249</b>	<b>219</b>	<b>255</b>	<b>2758</b>	<b>100</b>

<sup>1</sup> Please note that for all tables, all numbers less than five have been suppressed (with \*\*\*) in line with patient confidentiality. If there is only one number less than five in a category then two numbers will be suppressed to prevent back calculation from totals.

<sup>2</sup> White = Irish, British, other White background; Mixed = White and Black, White and Asian, mixed - any other; Black = African, Caribbean, other Black.

**Table 3: ED injury attendances by disposal method and month, October 2013 to September 2014**

Disposal method	Oct	Nov	Dec	Jan	Feb	Mar	Apr	May	Jun	Jul	Aug	Sep	Total	%
Discharged	1094	1031	1028	970	906	1220	1054	1153	1169	1244	1056	1168	13093	47
Referral/follow up	690	652	588	666	612	769	637	710	741	747	648	891	8351	30
Admitted	442	429	477	447	373	449	428	455	463	428	435	415	5241	19
Other	55	66	82	68	81	83	79	88	93	74	52	82	903	3
<b>Total</b>	<b>2281</b>	<b>2178</b>	<b>2175</b>	<b>2151</b>	<b>1972</b>	<b>2521</b>	<b>2198</b>	<b>2406</b>	<b>2466</b>	<b>2493</b>	<b>2191</b>	<b>2556</b>	<b>27588</b>	<b>100</b>

**Table 4: ED injury attendances by arrival mode and month, October 2013 to September 2014**

Arrival mode	Oct	Nov	Dec	Jan	Feb	Mar	Apr	May	Jun	Jul	Aug	Sep	Total	%
Other	1824	1710	1648	1659	1523	1991	1748	1914	1981	1995	1686	2038	21717	79
Brought in by ambulance	457	468	527	492	449	530	450	492	485	498	505	518	5871	21
<b>Total</b>	<b>2281</b>	<b>2178</b>	<b>2175</b>	<b>2151</b>	<b>1972</b>	<b>2521</b>	<b>2198</b>	<b>2406</b>	<b>2466</b>	<b>2493</b>	<b>2191</b>	<b>2556</b>	<b>27588</b>	<b>100</b>

**Table 5: ED injury attendances by incident location and month, October 2013 to September 2014**

Incident location	Oct	Nov	Dec	Jan	Feb	Mar	Apr	May	Jun	Jul	Aug	Sep	Total	%
Other	1539	1453	1416	1389	1398	1880	1573	1663	1700	1793	1509	1686	18999	69
Home	355	340	395	377	301	321	335	376	402	353	388	442	4385	16
Public place	154	114	152	138	104	115	118	140	152	130	169	183	1669	6
Work	142	141	124	128	98	102	115	128	124	127	119	139	1487	5
Educational establishment	91	130	88	119	71	103	57	99	88	90	6	106	1048	4
<b>Total</b>	<b>2281</b>	<b>2178</b>	<b>2175</b>	<b>2151</b>	<b>1972</b>	<b>2521</b>	<b>2198</b>	<b>2406</b>	<b>2466</b>	<b>2493</b>	<b>2191</b>	<b>2556</b>	<b>27588</b>	<b>100</b>

## ASSAULTS

**Table 6: ED assault attendances by gender, arrival mode and age group, October 2013 to September 2014**

	Assault attendances (n=1,393)		All injury attendances (n=27,588)	
	n	%	n	%
<b>Gender</b>				
Male	1006	72		55
Female	387	28		45
<b>Arrival mode</b>				
Other	996	72		79
Ambulance	397	28		21
<b>Age group</b>				
0 - 4	10	1		9
5 - 19	221	16		21
20 - 34	703	50		26
35 - 49	330	24		17
50 - 64	102	7		11
65 plus	27	2		15

Published January 2015

Trauma and Injury Intelligence Group

Centre for Public Health, Faculty of Education, Health and Community, Liverpool John Moores University,  
2nd Floor, Henry Cotton Building, Liverpool L3 2ET

T: 0151 231 4498 | E: [tiig@ljmu.ac.uk](mailto:tiig@ljmu.ac.uk) | W: [www.tiig.info](http://www.tiig.info) and [www.cph.org.uk](http://www.cph.org.uk) | Twitter: [www.twitter.com/tiig\\_cph](https://twitter.com/tiig_cph)